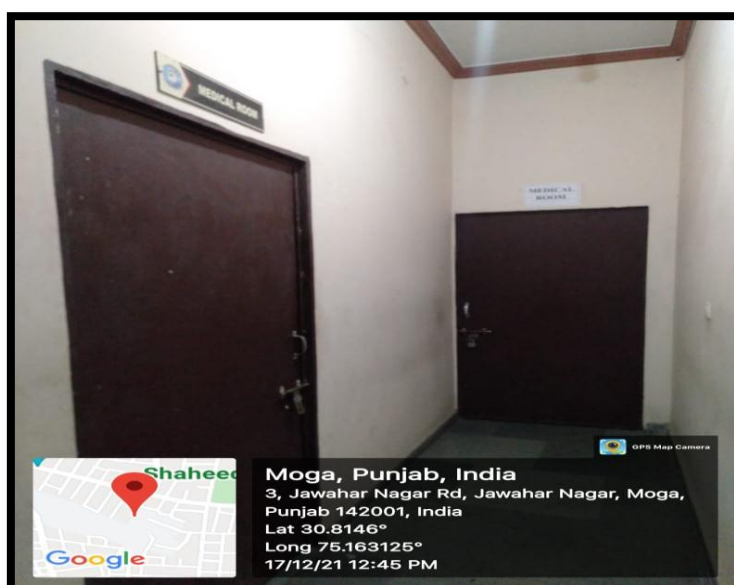


### 7.1.1 - Measures initiated by the Institution for the promotion of gender equity during the year

Specific facilities provided for women in terms of: a. Safety and security b. Counselling c. Common Rooms d. Day care center for young children e. Any other relevant information

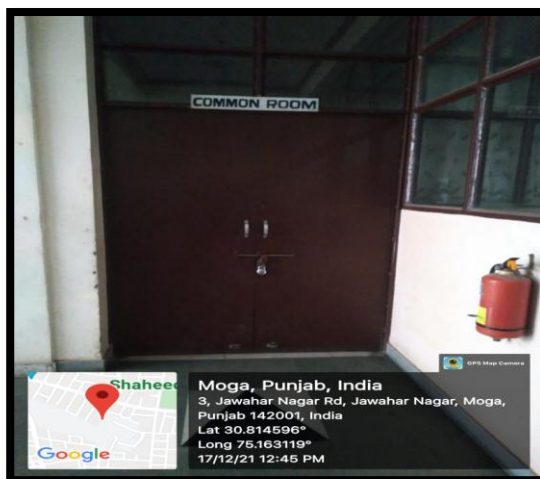
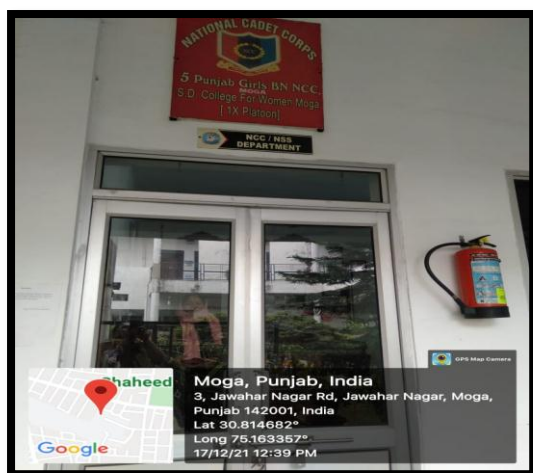
**Safety and Security-** Two security guards have been deployed, one at the main entry to the college, and the second one at the busy road leading up to the college. They check the identity of each person so that only bona-fide students enter the college. Every person entering the college is also required to make an entry in the register maintained by the security guards. This helps to prevent the entry of unwanted visitors into the college. CCTV's have been installed at strategic positions for security and surveillance reasons. This helps to monitor all the activities taking place within the college and prevents the entry of intruders. Installation of CCTV cameras acts as a deterrent towards unwanted behaviour.



**Anti-ragging** Committee has been constituted to provide support to the students affected by this menace. Awareness about ragging is created in the minds of students every year so that it allows them how to respond if such a situation arises. Helpline numbers are made available to the students so that they can report incidents of ragging or sexual harassment. New students are made to sign an anti-ragging pledge. Poster has been displayed to sensitise the students about the existence of the problem.



**Fire-extinguishers** have been installed at strategic positions in the college.

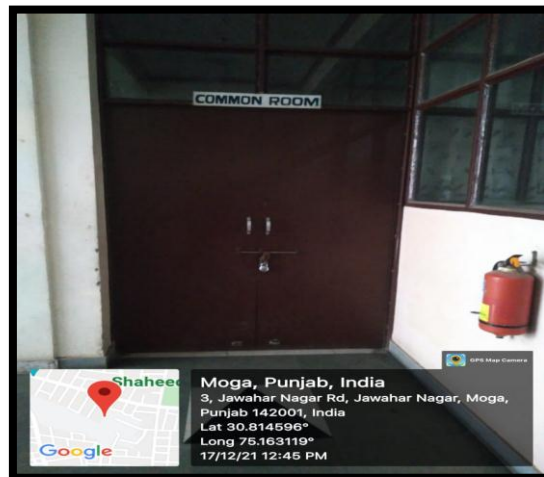


**Counselling-** Timely counselling is provided to students in case they face any problems related to their studies or any other personal problem. Career counselling cell provides information related to career prospects of different courses offered by our college. During the pandemic, psychological counselling was offered to the students.

*for me*  
Principal  
S.D.College for Women  
Moga



**Common Rooms** – Our college has a well-furnished common room which serves the dual purpose of relaxation and recreation. Canteen services can be availed in the common room.



*[Signature]*  
Principal  
S.D.College for Women  
Moga